

\$435,000 - 1506, 1010 6 Street Sw, Calgary

MLS® #A2213424

\$435,000

2 Bedroom, 2.00 Bathroom, 701 sqft

Residential on 0.00 Acres

Beltline, Calgary, Alberta

Welcome to urban living at its finest! This stunning 15th floor corner unit in the heart of Downtown Calgary offers panoramic city views and an unbeatable location. Flooded with natural light from large windows, this beautifully maintained condo boasts an open-concept layout perfect for both relaxing and entertaining. Just steps away from the city's best restaurants, shopping, transit, and entertainment – including easy access to the amazing Calgary Stampede parties – you'll love being at the center of it all. Whether you're a young professional or looking for a vibrant city lifestyle, this unit delivers modern living with the best of Calgary right outside your door!



Built in 2017

Essential Information

MLS® #	A2213424
Price	\$435,000
Bedrooms	2
Bathrooms	2.00
Full Baths	2
Square Footage	701
Acres	0.00
Year Built	2017
Type	Residential
Sub-Type	Apartment
Style	Single Level Unit

Status Active

Community Information

Address 1506, 1010 6 Street Sw

Subdivision Beltline

City Calgary

County Calgary

Province Alberta

Postal Code T2R 1B4

Amenities

Amenities Elevator(s), Fitness Center, S

Parking Spaces 1

Parking Underground

Interior

Interior Features Open Floorplan

Appliances Built-In Oven, Dishwasher, Microwave, Refrigerator, Was

Heating Central

Cooling Central Air

of Stories 31

Exterior

Exterior Features Balcony

Construction Concrete

Additional Information

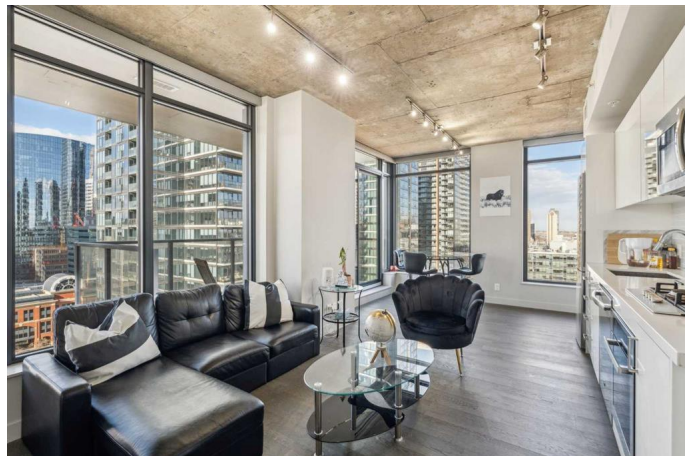
Date Listed April 21st, 2025

Days on Market 7

Zoning CC-X

Listing Details

Listing Office Real Broker



Data is supplied by Pillar 9â„¢ MLSÂ® System. Pillar 9â„¢ is the owner of the copyright in its MLSÂ® System. Data is deemed reliable but is not guaranteed accurate by Pillar 9â„¢. The trademarks MLSÂ®, Multiple Listing ServiceÂ® and the associated logos are owned by The Canadian Real Estate Association (CREA) and identify the quality of services provided by real estate professionals who are members of CREA. Used under license.