

# \$629,900 - 71 Bridleridge Crescent Sw, Calgary

MLS® #A2196537

**\$629,900**

4 Bedroom, 4.00 Bathroom, 1,646 sqft

Residential on 0.09 Acres

Bridlewood, Calgary, Alberta

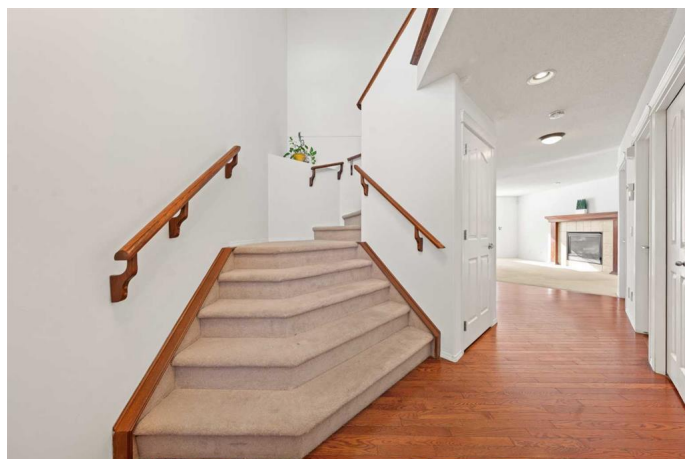
OPEN HOUSE\*\*\* APRIL 26, and 27 SAT AND SUN 2PM TO 4PM! Welcome to 71 Bridleridge Crescent SW, a beautiful FULLY DETACHED HOME in the sought-after community of Bridlewood. This well-maintained and FRESHLY PAINTED TWO-STORY property features 4 SPACIOUS BEDROOMS, 3.5 BATHROOMS, a FINISHED BASEMENT, and an ATTACHED DOUBLE GARAGE. Modern open floor plan - main floor features gorgeous hardwood flooring, Kitchen features white cabinetry, STAINLESS STEEL APPLIANCES, a corner walk-in pantry, a large island with dual sinks, and ample counter space. Sliding doors open to a COVERED DECK with skylights, perfect for year-round outdoor relaxation, this home is perfect for families looking for comfort, style, and functionality. Close to schools, parks, and shopping, with easy access to transit & major roads like Stoney Trail & Macleod Trail. This home is a fantastic opportunity to own a spacious, MOVE-IN READY home in Bridlewood. Whether you're a growing family or looking for a home with additional living space, 71 Bridleridge Crescent SW offers it all.

Built in 2002

## Essential Information

MLS® # A2196537

Price \$629,900



|                |             |
|----------------|-------------|
| Bedrooms       | 4           |
| Bathrooms      | 4.00        |
| Full Baths     | 3           |
| Half Baths     | 1           |
| Square Footage | 1,646       |
| Acres          | 0.09        |
| Year Built     | 2002        |
| Type           | Residential |
| Sub-Type       | Detached    |
| Style          | 2 Storey    |
| Status         | Active      |

### Community Information

|             |                            |
|-------------|----------------------------|
| Address     | 71 Bridleridge Crescent Sw |
| Subdivision | Bridlewood                 |
| City        | Calgary                    |
| County      | Calgary                    |
| Province    | Alberta                    |
| Postal Code | T2Y 4E9                    |

### Amenities

|                |                        |
|----------------|------------------------|
| Parking Spaces | 4                      |
| Parking        | Double Garage Attached |
| # of Garages   | 2                      |

### Interior

|                   |   |
|-------------------|---|
| Interior Features | Breakfast Bar, Granite Counters, Low Flow Plumbing Fixtures, Open Floorplan, Pantry, Walk-In Closet(s), Wet Bar |
| Appliances        | Dishwasher, Electric Stove, Microwave, Range Hood, Refrigerator, Washer/Dryer, Window Coverings                 |
| Heating           | Forced Air  |
| Cooling           | None  |
| Fireplace         | Yes   |
| # of Fireplaces   | 1   |
| Fireplaces        | Gas   |
| Has Basement      | Yes   |
| Basement          | Finished, Full  |

### Exterior

|                   |  |
|-------------------|--|
| Exterior Features | None   |
| Lot Description   | Back Yard, Landscaped, Lawn, Rectangular Lot |
| Roof              | Asphalt Shingle                              |
| Construction      | Stone, Vinyl Siding, Wood Frame              |
| Foundation        | Poured Concrete                              |

**Additional Information**

|                |                     |
|----------------|---------------------|
| Date Listed    | February 26th, 2025 |
| Days on Market | 61                  |
| Zoning         | R-G                 |

**Listing Details**

|                |             |
|----------------|-------------|
| Listing Office | Real Broker |
|----------------|-------------|

Data is supplied by Pillar 9â„¢ MLS® System. Pillar 9â„¢ is the owner of the copyright in its MLS® System. Data is deemed reliable but is not guaranteed accurate by Pillar 9â„¢. The trademarks MLS®, Multiple Listing Service® and the associated logos are owned by The Canadian Real Estate Association (CREA) and identify the quality of services provided by real estate professionals who are members of CREA. Used under license.